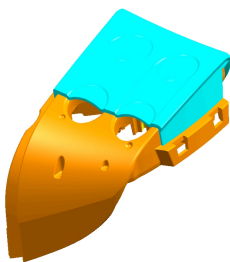
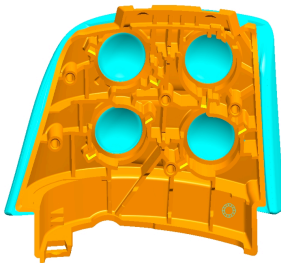


Multifunction steering wheel switch with closed, seam-free operator surface

Automotive Industry



Requirements

- Closed, flexible switch covering
 - o Water proof
 - o Dust proof
 - o Abrasion proof
 - o Cleaning agent resistant
- Force-Travel specification
- Good surface-grip & Finger guiding
- Day & Night Design with homogenous light output
- Integrated into steering wheel 3D contour
- Consistence tactile feeling from -40 to +80°C
- Part reduction

Implementation

- Switch cover with integrated, flexible & seam-free surface in 2-component injection materials (thermoplastics & silicone)
- Integrated switch guides
- Electronics sealed off by closed surface
- Laser-etched symbols
- High abrasion-proof top-coat
- Switch function via built-in guided actuators on micro switches / metal domes

Company Details

- Long standing applications & process knowledge
- On-site application assistance
- Fast sample & production delivery due to in-house tool-making
- Short optimisation loops
- Customer driven Logistics, local & worldwide storage, consignment stock
- TS16949, ISO14001